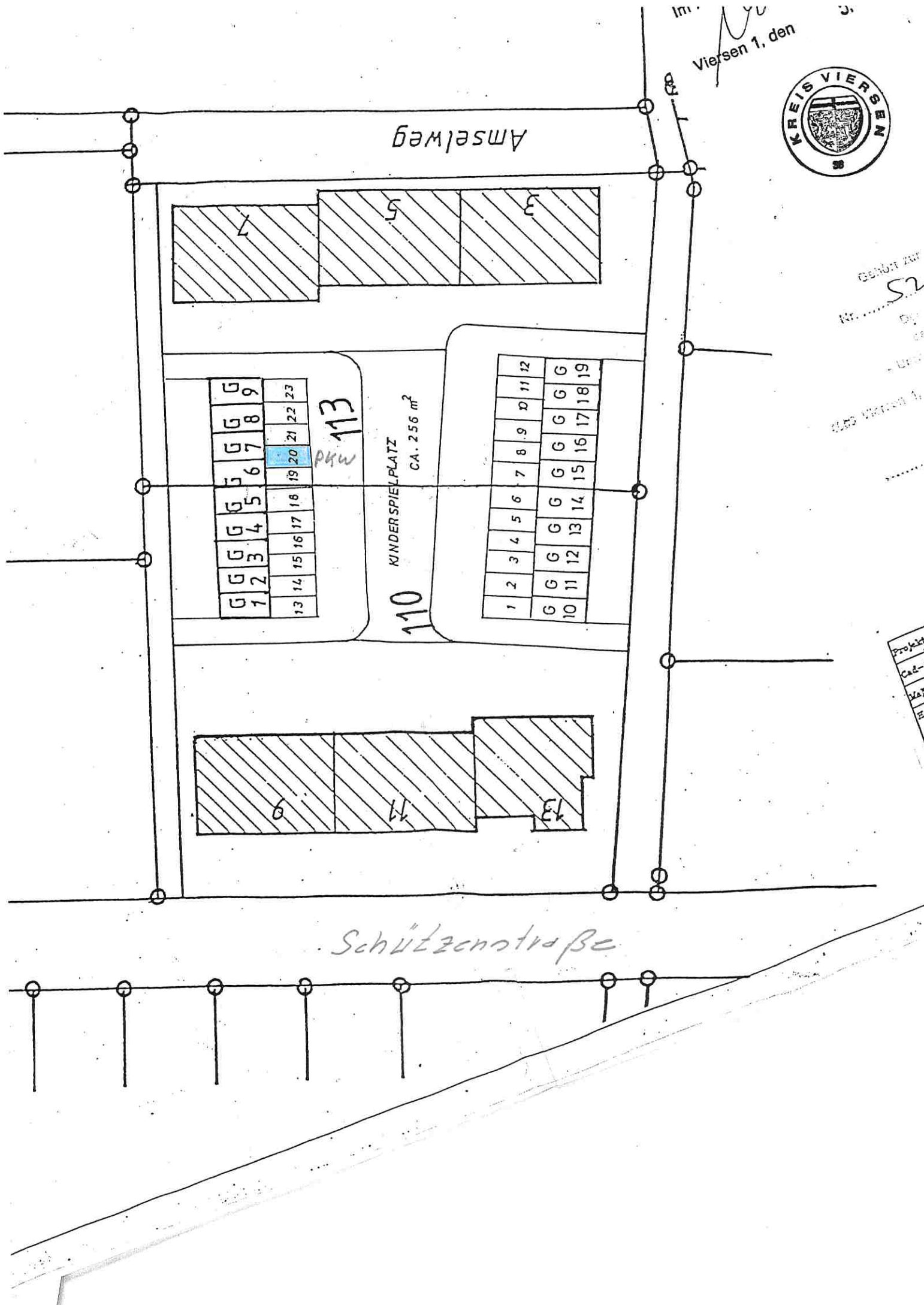


Im. *M. Yu*
Viersen 1, den



Gebiet zur
Nr. *S2*
Dy.
- Urt.
0.55. 1. 1.

Projekt
Cad-
Map
1:50



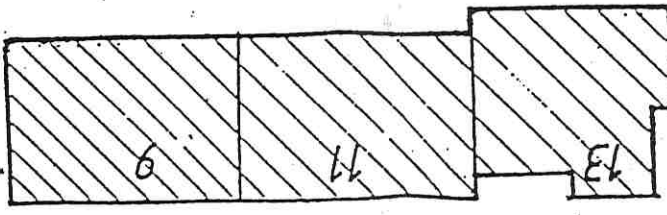
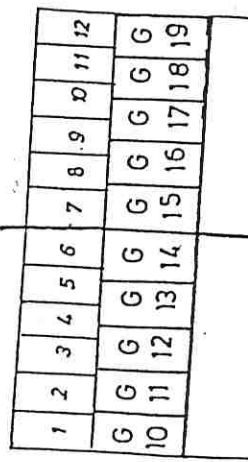
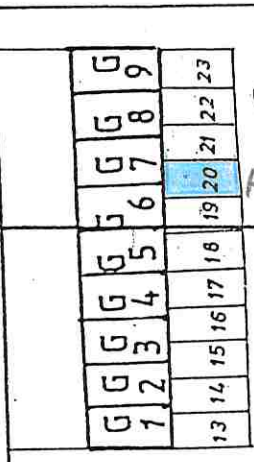
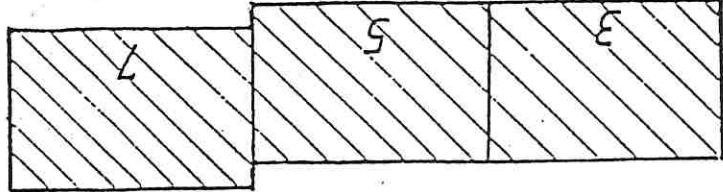
Amsehweg

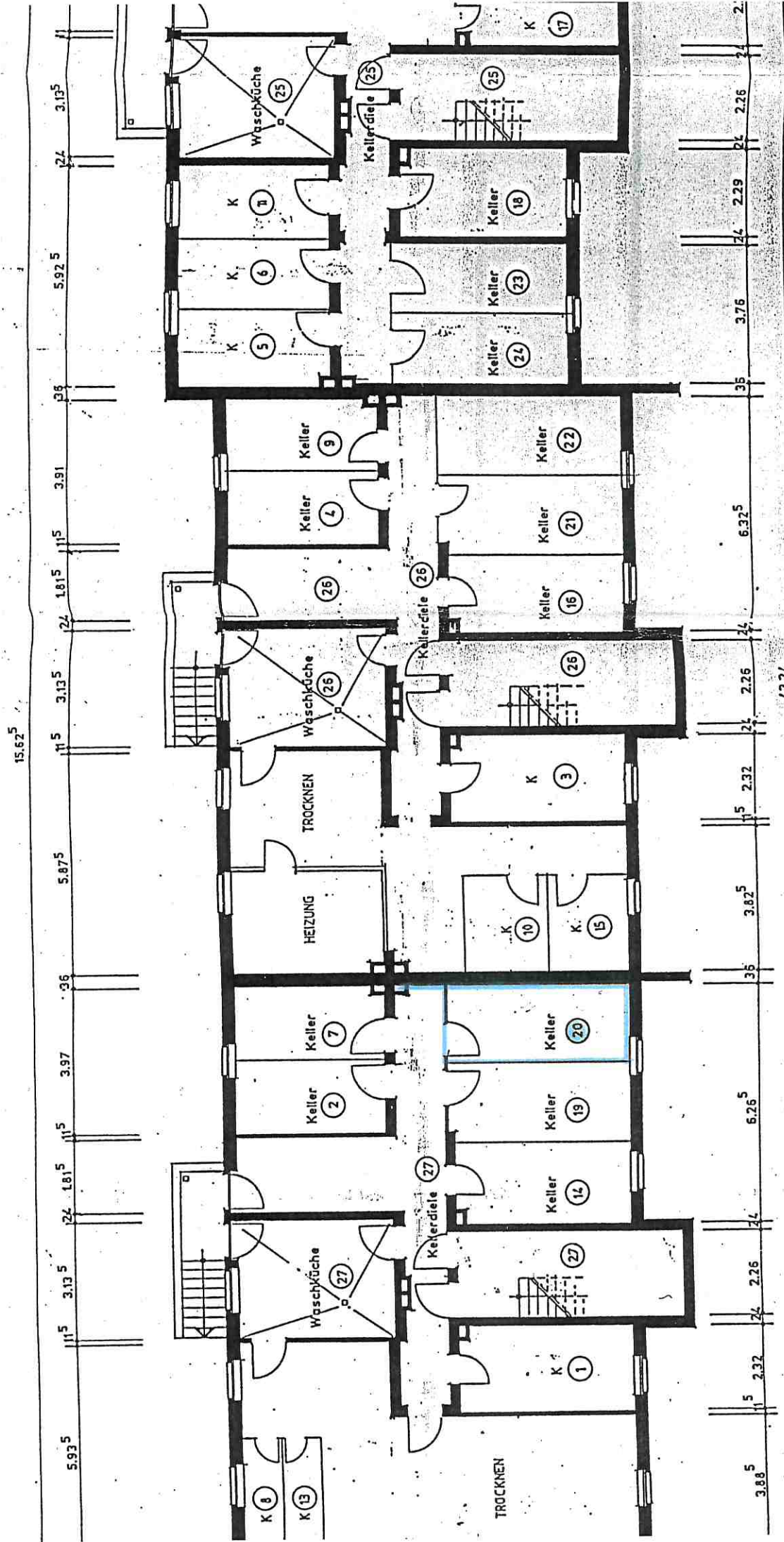
PKW 113

KINDERSPIELPLATZ
CA. 256 m²

110

Schützenstraße





Aufteilungsplan gem. § 7 Abs. 4 Nr. 1
 des Wohnungseigentumsgesetzes vom
 15. 3. 1951 (BGBl. I, S. 175).

Kreis Viersen
 Der Oberkreisdirektor :
 - Planungsamt -
 Im Auftrage:

Viersen, den 5.11.92

allergeschoss Typ A