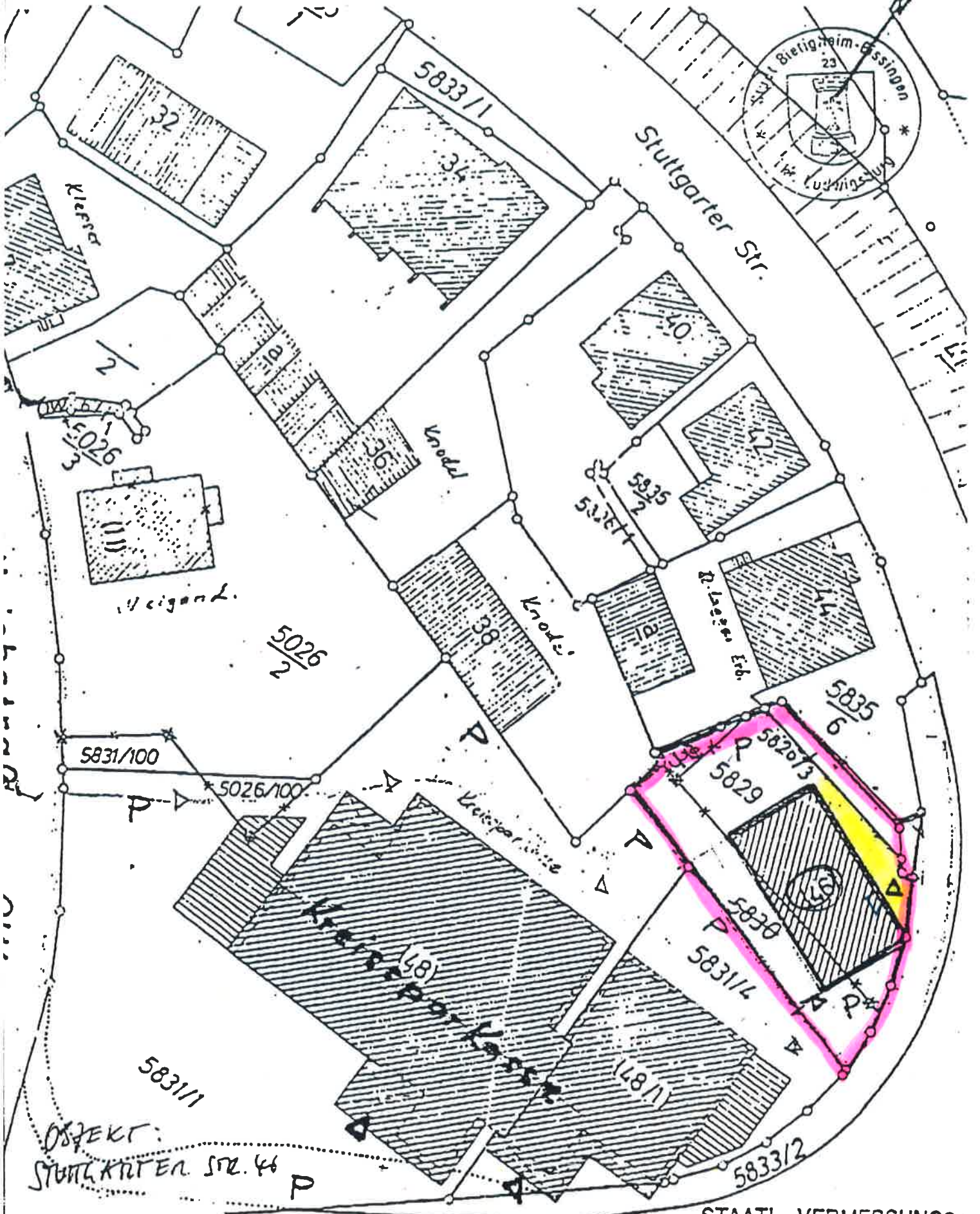


Gemeinde: Bietigheim-Bissingen
Ortschaft: Bietigheim

Flurkarte NO 4306
M 1: 500

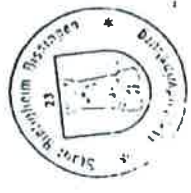
IZU VIN S. 30.41 (1)



OBJEKT:
STUTTGARTER STR. 46

STAATL. VERMESSUNGS-
712 BIETIGHEIM-BISSINGEN
bestehenbleibend

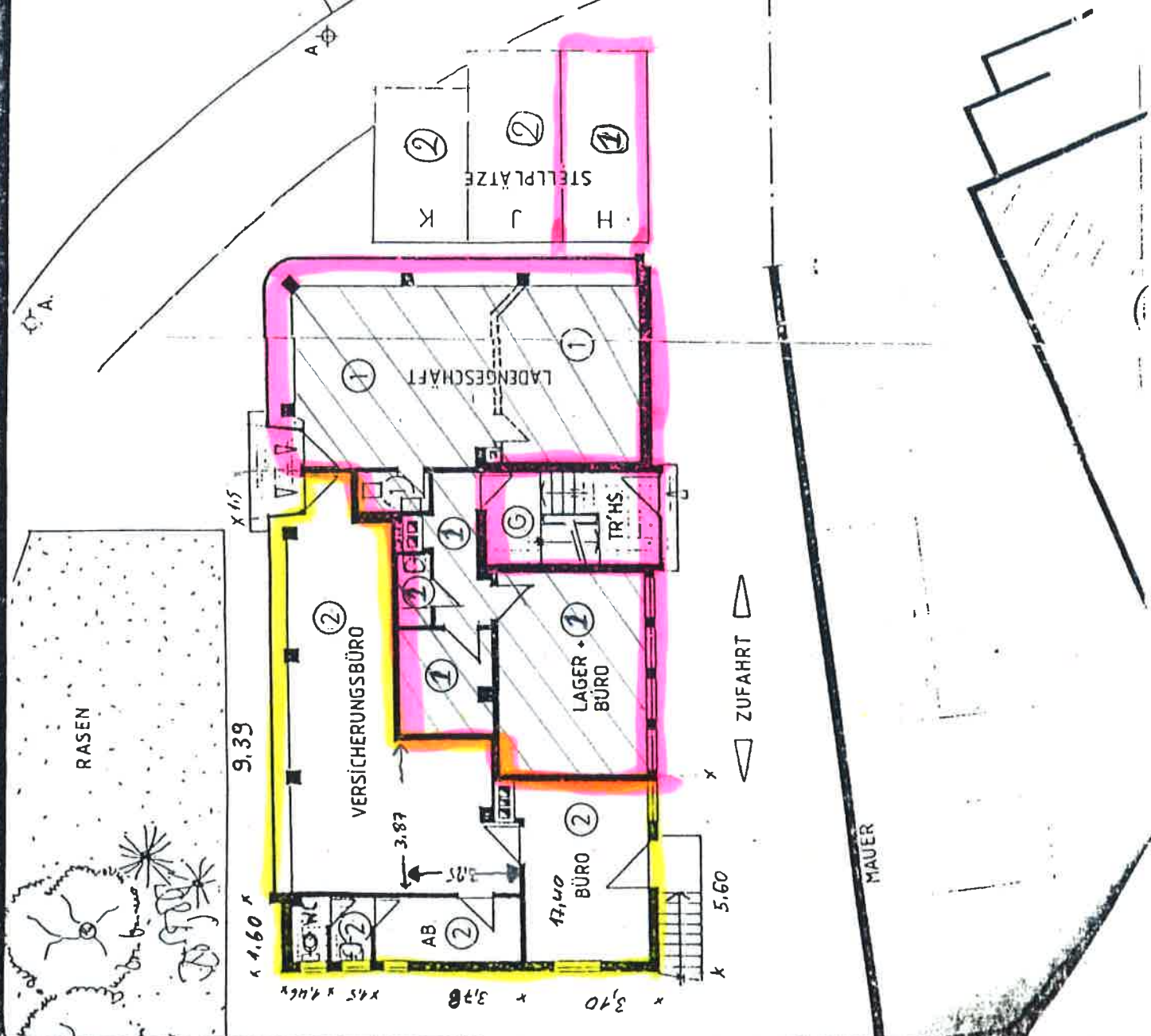
3



ARTER

STRASSE

FUSSGÄNGER



TEILUNGSPLAN

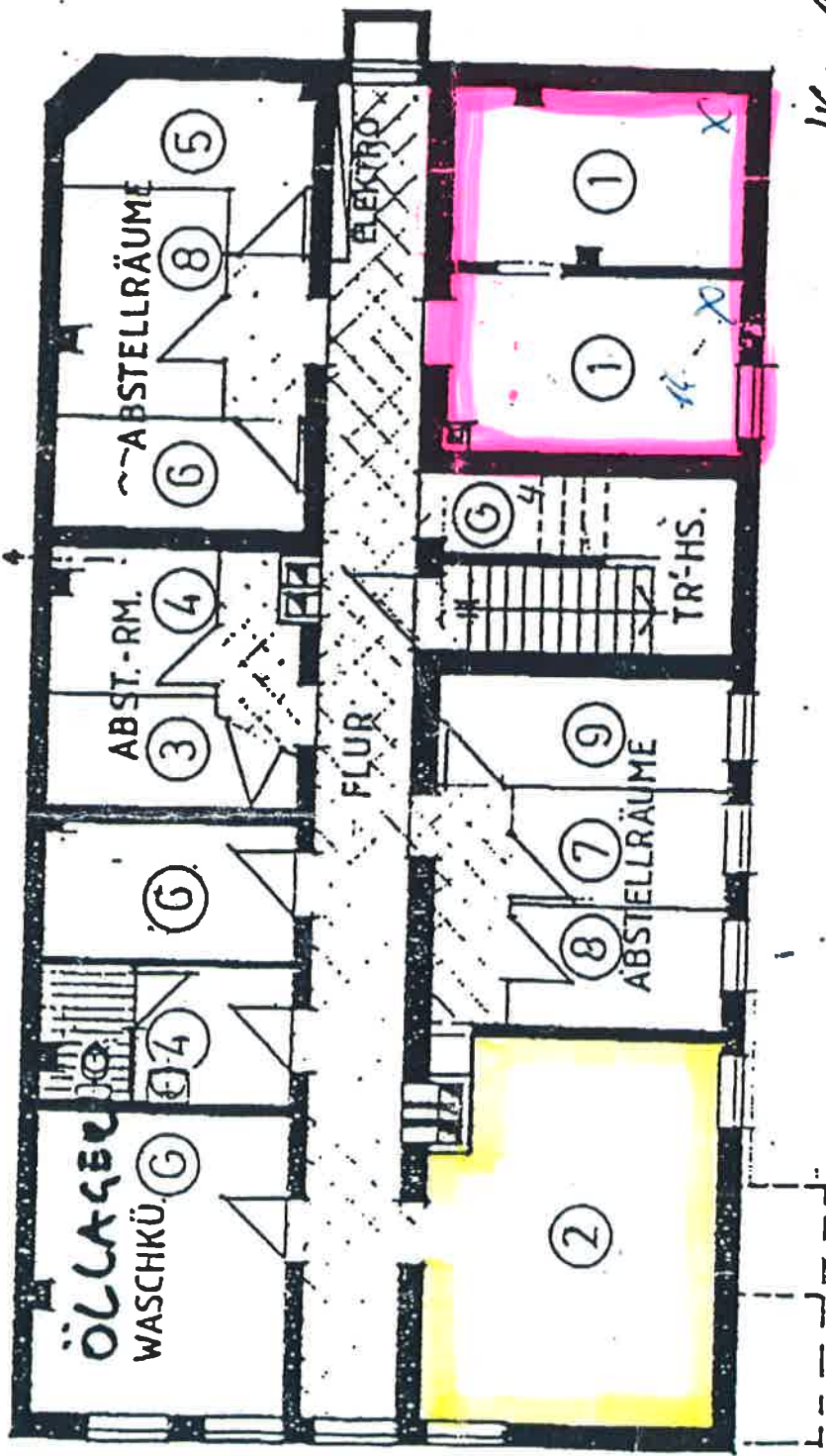
GEBÄUDE
STUTTGARTERSTR 46
BIETIGHEIM-BISS.

ERDGESCHOSS 1 : 100

GEF. 4.86 ANERK.

WOLFGANG U. BENDEL
DIPLOM-UND PLANER
FÜR ARCHIT. UND STÄDTPL.
STUTTGART

W. Bendel
J. Nasser
G. Nasser



UG: 1:100
 STUTTGARTEN STR. 48

◁ ZUFAHRT ▷

GRENZMAUER

PARKPLATZ

Abwasser

ELEKTRO

FLUR

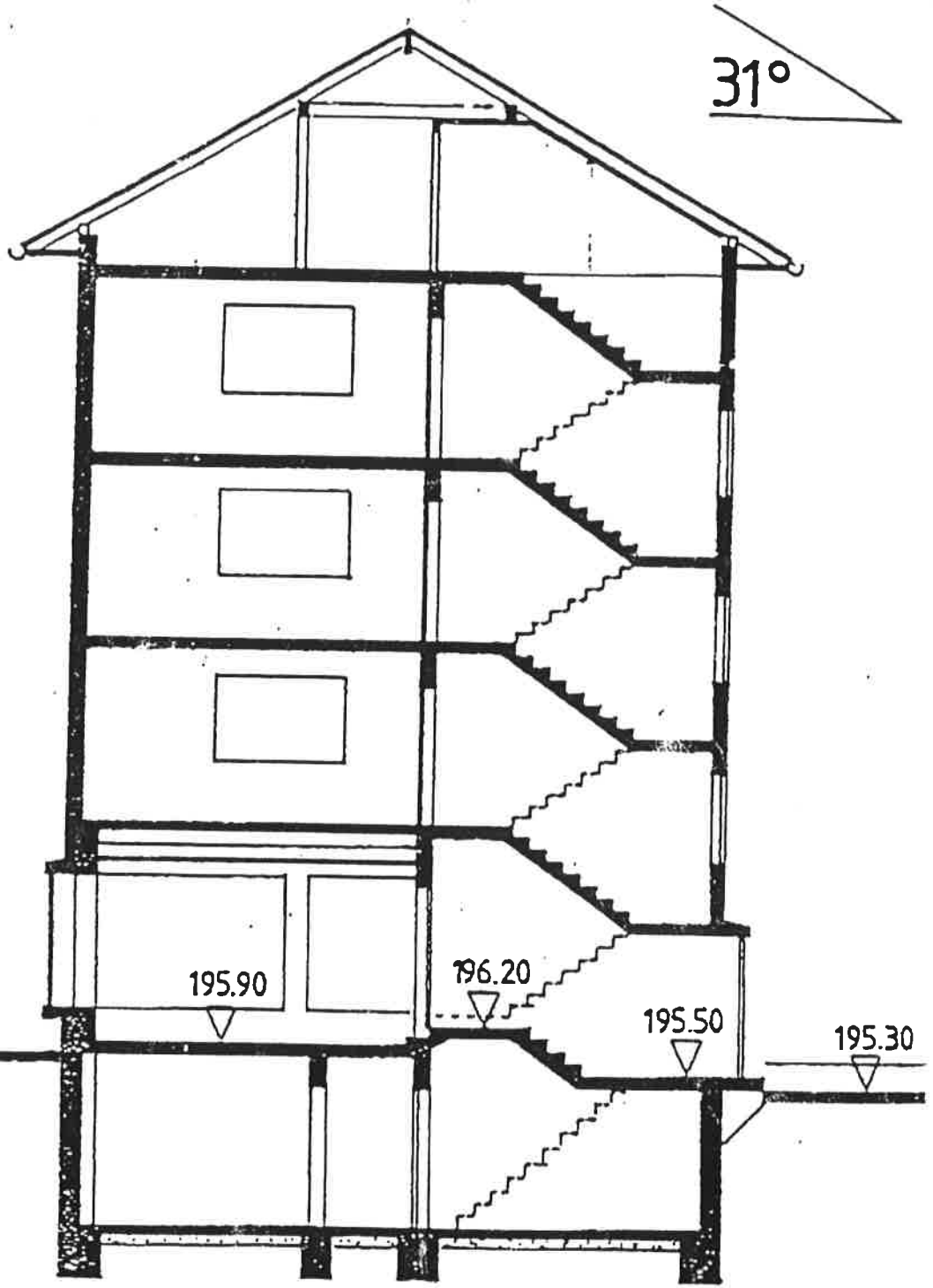
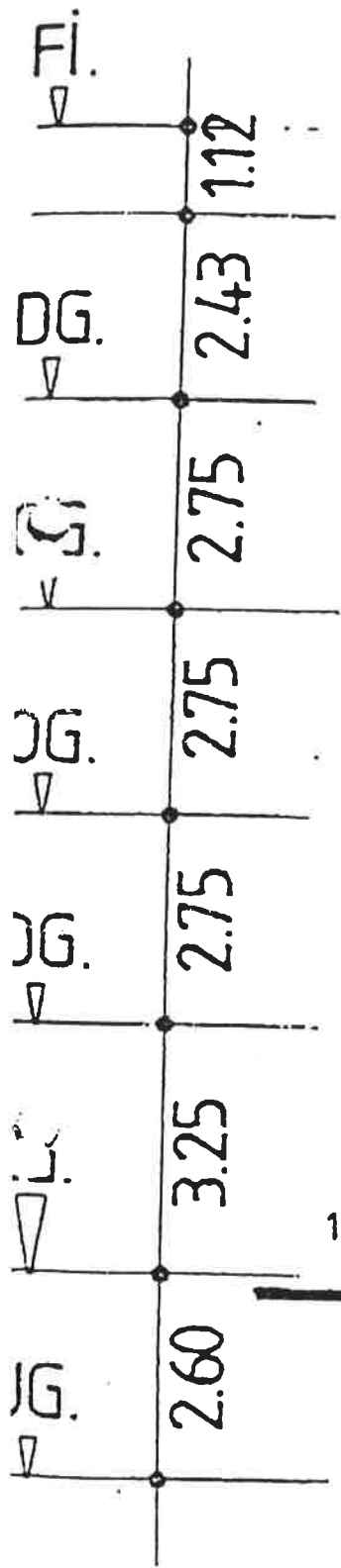
ABSTELLRÄUME

ABST.-RM.

ÖLLAGER
 WASCHKÜ.

ABSTELLRÄUME

TR-HS.



SCHEIT: 1:100
STUFGARTEN SON. 46

