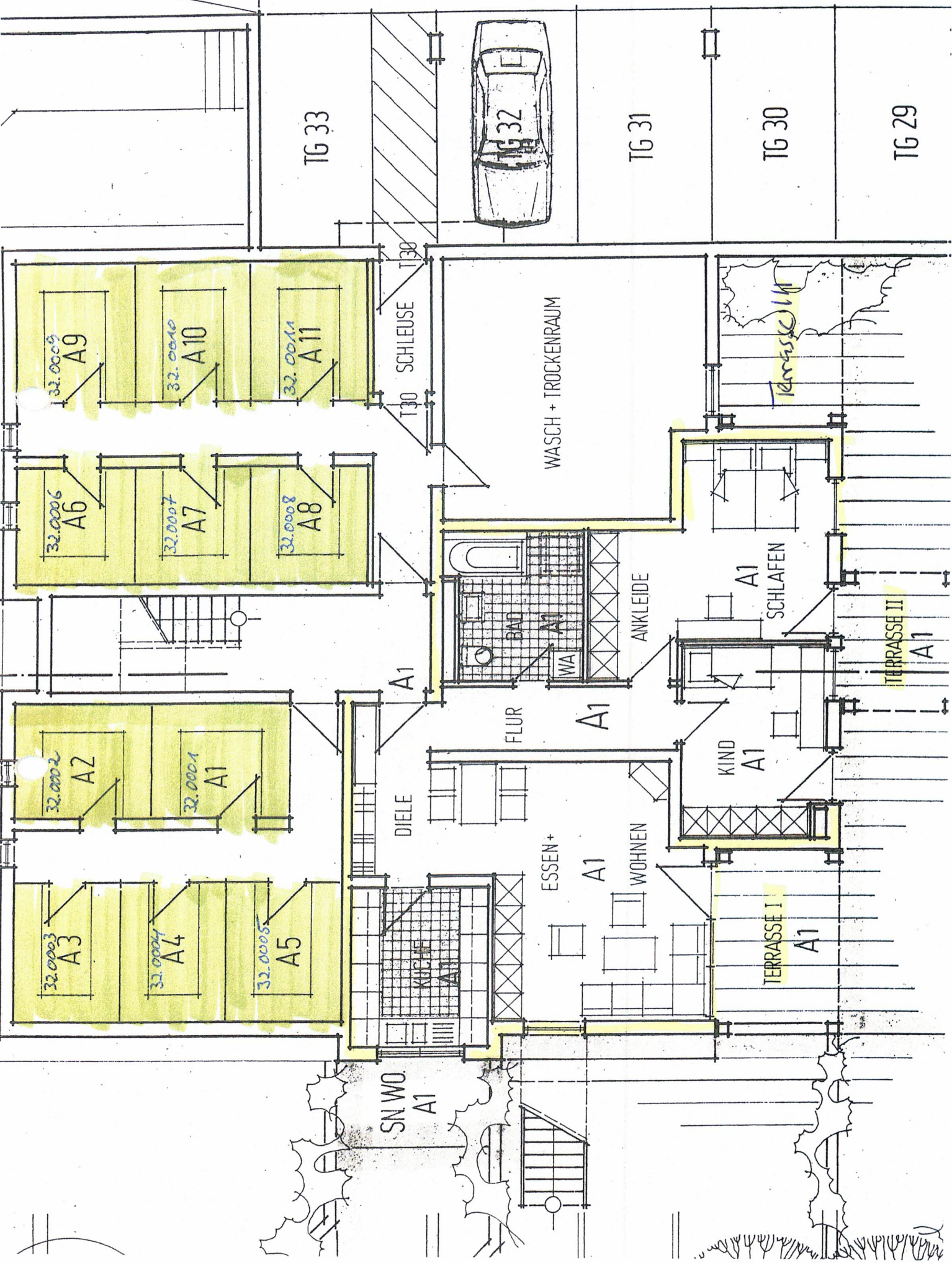
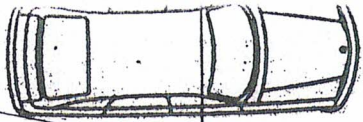


Kellerplan Rheinfeldern, Neuenahrer Str. 10-12
Keller 2



TG 33

TG 31

TG 30

TG 29

T30 SCHLEUSE

WASCH + TROCKENRAUM

A1 SCHLAFEN

TERRASSE II
A1

FLUR

KIND
A1

DIELE

ESSEN +
A1

WOHNEN

TERRASSE I
A1

SN WD
A1

KUCHE
A1

BAD
A1

ANKLEIDE
A1

32.0009
A9

32.0010
A10

32.0011
A11

32.0006
A6

32.0007
A7

32.0008
A8

32.0002
A2

32.0001
A1

32.0003
A3

32.0004
A4

32.0005
A5

Haus A

Untergeschoss

Wohnung A 1 3 1/2 Zimmer Süß

Küche	$3,38^5 \times 3,01$	=	10,19 m ²
Diele	$3,82^{25} \times 1,63^5$	=	6,25 m ²
Essen u. Wohnen	$2,51 \times 1,49$		
	$+ 5,63^5 \times 3,63^5$		
	$+ 3,76 \times 0,75$	=	27,04
Flur	$1,38^5 \times 5,01$	=	6,94 m ²
Bad	$3,26 \times 3,01$		
	$./.\ 2,25 \times 0,37^5$	=	8,97 m ²
Ankleide u. Schlafen	$3,26 \times 1,88^5$		
	$+ 2,38^5 \times 0,11^5$		
	$+ 4,26 \times 3,13^5$	=	19,77 m ²
Kind	$4,13^5 \times 3,13^5$	=	12,96 m ²
Terrasse I	$\frac{3,76 \times 2,62^5}{2}$	=	4,94 m ²
Terrasse II	$\frac{3,00 \times 2,50}{2}$	=	3,75 m ²
			<hr/>
			100,81 m ²
./.. 3 % Putz			3,02 m ²
			<hr/>
			97,79 m²
			=====
			<u>97,51 m²</u>

15.3.90 *hw*

wfl. beh. 88,2